

# NEW 70 FIRST OF THE LONG RANGE SERIES

AS ALWAYS SEAWORTHY AND WITH AN UNMISTAKABLE ELEGANCE



**solaris***power*

DAL 1974 PER CHI NAVIGA

NEW  
70

LONG RANGE

60' AND 80'  
COMING SOON



LARGE VOLUMES, SUPERIOR COMFORT

COCKPIT WITH TWO LARGE SOFAS “VIS À VIS”  
AND A SEPARATE DINING TABLE FOR EIGHT PEOPLE

NO 70-FOOTER BOASTS  
SUCH A ROOMY COCKPIT

A FUNCTIONAL LIVING  
AREA WITH EVERY  
COMFORT

INTERIOR VOLUMES EXCEED ANY OTHER  
70-FOOTERS: THESE INCLUDE A LARGE  
KITCHEN, A SOFA 3.20 M WIDE, A TV SET AND  
MANY STOWING CUPBOARDS.







SEA PERFORMANCE HAS ALWAYS BEEN OUR  
FIRST PRIORITY. THIS IS WHERE WE INVEST  
OUR BEST RESOURCES

---

SMOOTH SAILING THROUGH THE  
WAVES AND A DRY DECK IN  
CHOPPY SEAS

---

The sharp shape of the bow and the pronounced flare, softens the passage through the waves and keeps the deck dry.

GREAT STABILITY WHILE CRUISING  
AND AT ANCHOR

---

The hull shape guarantees safety, great stability and comfort when cruising and at anchor, without the need for stabilizers.

LOW FUEL CONSUMPTION RESULTING  
IN EXCELLENT RANGE AND REDUCED  
CO<sub>2</sub> EMISSIONS

---

The advanced studies on the hydrodynamics of the hull and the correct balance of weights ensure low fuel consumption, resulting in excellent range and reduced CO<sub>2</sub> emissions.

EFFICIENT CRUISING BOTH IN  
DISPLACEMENT AND IN PLANING  
MODE

---

Unlike ordinary boats with planing hulls, Solaris Power are capable to cruise steadily and without roll even in displacement mode.







## THE MAIN COMFORTS ON BOARD

---

### GREAT LIVABILITY INSIDE AND OUTSIDE

---

An ideal proportion between internal and external spaces allows guests to move around freely, enjoying every moment of life on board. Contact with the sea is continuous, and protection from the sun is guaranteed by large shaded areas. Life in the cockpit couldn't be more comfortable.

### FOREDECK LOUNGE

---

A large horseshoe-shaped sofa facing forward can be connected via an extendable table to a contrasting sofa in the sundeck.

### FACILITIES OF THE BEACH AREA

---

This aft deck is particularly spacious, and makes access to the sea very easy, both when lifted and semi-submerged.

### WALKAROUND

---

Lateral walkways afford easy and safe movement from bow to stern in any sea condition.

### ROOMY TENDER GARAGE

---

This can accomodate lengthwise a 4m water-jet and various water toys.



FLYING BRIDGE







TECHNICAL  
SPECIFICATIONS

LENGTH OVERALL	21,24 m / 69'8"
HULL LENGTH	19,08 / 62'7"
WATER LINE LENGTH	18,65 m / 61'2"
BEAM	5,99 m / 19'8"
DRAFT	1,80 m / 5'11"
APPROX. LIGHT DISPLACEMENT	53.000 kg / 116,845 lbs
APPROX. LOAD DISPLACEMENT	59.000 kg / 130,072 lbs
FUEL CAPACITY	4.100 L / 1083 US gal
WATER CAPACITY	1.200 L / 317 US gal
ENGINES	2 x Volvo Penta D11-IPS 950 533 kW / 725 hp 2500 rpm 2 x Volvo Penta D13- IPS 1350 735 kW / 1000 hp 2400 rpm
MAX SPEED	21 kn - IPS 950 28 kn - IPS 1350
CRUISING SPEED	12 kn - IPS 950 16 kn - IPS 1350
CABINS	3 + 1 (optional) + 1 (crew)
BATHROOMS	3 + 1 (optional) + 1 (crew)
MAX PERSONS CAPACITY	18
CE CATEGORY	A (Ocean)
DESIGN	Dragoni Design Lab Solaris Power Design Team











MAIN DECK LAYOUTS

FLY DECK



MAIN DECK  
Version A (standard)



MAIN DECK  
Version B (optional)

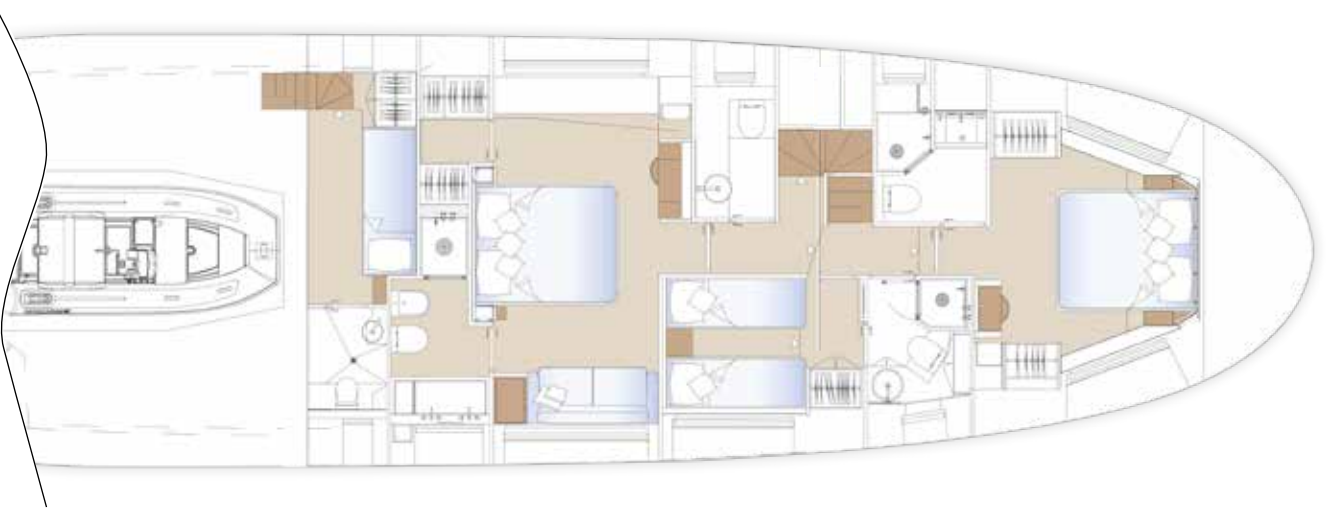


LOWER AND FLY DECK LAYOUTS

LOWER DECK  
Version A (standard)



LOWER DECK  
Version B (optional)





SOLARIS: SINCE 1974  
QUALITY, SEAWORTHINESS  
AND ELEGANCE



The boatyard’s reputation, founded in Aquileia more than 50 years ago, is better known among German, Swiss and Austrian yachtsmen than it is in Italy. Right from the beginning, the company’s philosophy has been the building seaworthy, solid and secure sailing boats to the highest quality standards, capable of challenging the prestigious Scandinavian and Dutch yacht builders. Fittingly, Solaris claims that our yachts are also: “Built for mariners”. Its volume and revenues increased fivefold in just a few years and

today it is the European leader in the category of top-class sailing boats from 50’ to 110’. There are not many boatyards left today, who can combine leading-edge technology with traditional craftsmanship of detail and finishing as Solaris Yachts does. Since 2008 Solaris also operates a production unit dedicated to motoryachts from 44’ to 100’, including five 90’ luxury displacement motoryachts for an internationally renowned brand. This facility is now the builder of the new Solaris Power range, to the same exacting quality standards of Solaris sailboats.

TRADITIONAL CRAFTSMANSHIP

There are not many boatyards left today, that can combine leading-edge technology with traditional craftsmanship of details and finishing as Solaris Yachts does.



THE LOBSTER BOAT HERITAGE

Solaris was among the first in Europe to build a lobster boat, the 47-foot Express Cruiser, by Bruce King, designer of the famous American Hinckley line.





